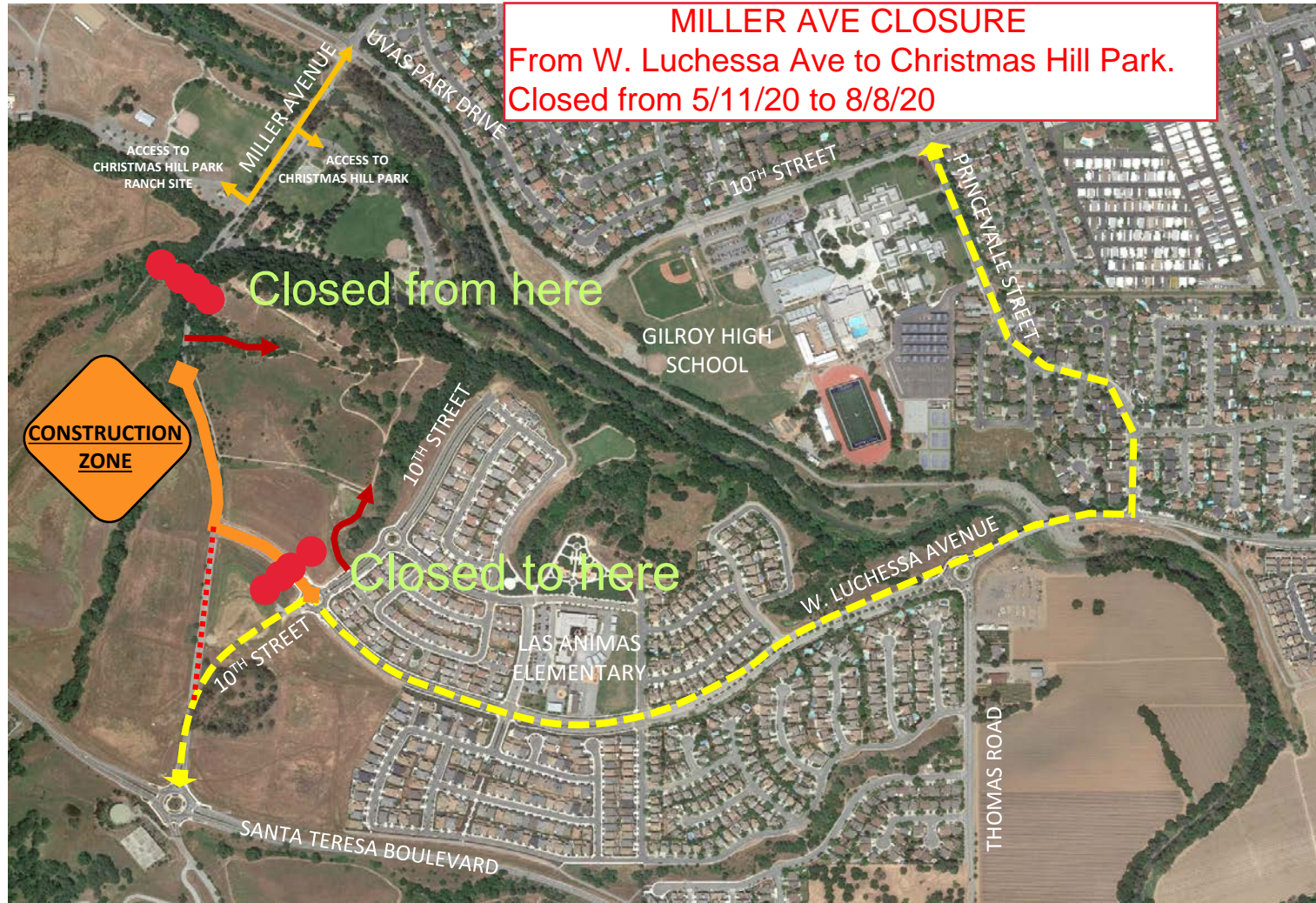






GLEN LOMA RANCH MILLER AVENUE TEMPORARY DETOUR PLAN



LEGEND

-  CONSTRUCTION ZONE
-  TEMPORARY DETOUR
-  PORTION OF EX. MILLER AVE. TO BE REMOVED WHEN W. 10TH STREET IS COMPLETE (APRIL 2019)
-  WILDLAND FIRE ACCESS